

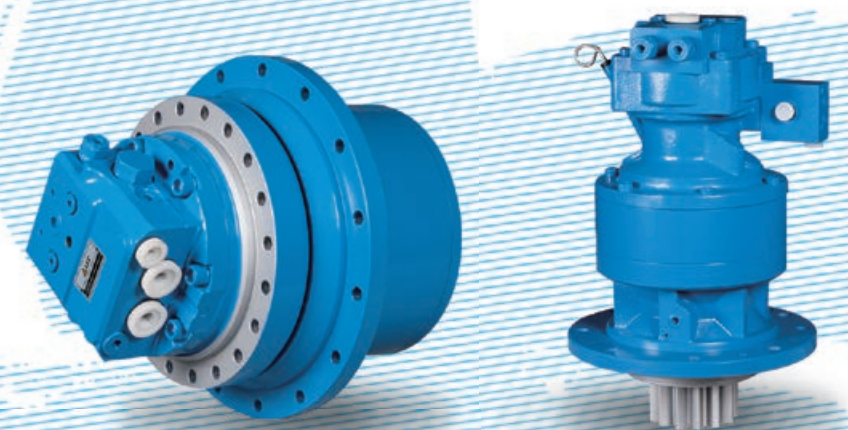


国家强基工程示范企业
Demonstration Enterprise of National
Consolidation of Industrial Foundation Program



力克川液压
LKC HYDRAULIC

专业 专注 创新 极致
Professional Concentrated Innovative Extreme



液压驱动装置专业制造商

服务热线 400 116 2006
www.likechuan.com

青岛力克川

地址: 中国青岛高新技术产业开发区思源路36号

电话: +86-532-55676157

国内邮箱: lkc2006@likechuan.com

海外邮箱: lkc@lkc2006.com

LKC Qingdao

ADD: No. 36, Siyuan Road, Qingdao High-tech Industrial Development Zone, China

TEL: +86-532-55676157

Domestic E-mail: lkc2006@likechuan.com

Overseas E-mail: lkc@lkc2006.com

本公司保留产品更改权, 如有变动, 恕不另行通知。

We reserve the right to change our products without prior notice.

2018年第1版印刷

青岛力克川液压机械有限公司
QINGDAO LKC HYDRAULIC MACHINERY CO., LTD.

Contents

目录

企业简介	< 01 >	Company Profile
力克川发展历程	< 02 >	LKC Development Process
战略目标	< 04 >	Strategic Goals
力克川学院	< 04 >	LKC College
研发与试验能力	< 05 >	R&D and Testing Capabilities
微型系列行走马达	< 06 >	Micro Series Travel Motor
小型系列行走马达	< 07 >	Small Series Travel Motor
中型系列行走马达	< 08 >	Medium Series Travel Motor
闭式系统行走马达	< 09 >	Closed System Travel Motor
微型系列回转马达	< 10 >	Micro Series Swing Motor
中小型系列回转马达	< 11 >	Small and Medium Series Swing Motor
应用领域	< 12 >	Applications

Profile Company 企业简介>>

青岛力克川液压机械有限公司2006年成立于青岛高新技术产业开发区，主要从事工程机械、矿山机械、桩工机械、路面机械、高端农用机械等行业的液压驱动装置的研发、制造、销售与服务。已形成大、中、小、微系列化发展格局，是液压驱动装置专业制造商。

公司荣获“国家工业强基工程重点产品、工艺“一条龙”应用计划示范企业”、“国家工信部工程机械高端液压件及液压系统产业化协同工作平台成员单位”、“国家知识产权优势企业”、“国家高新技术企业”等荣誉。产品被评为“青岛市名牌”，列入“全国机械用户满意产品名录”。

Qingdao LKC Hydraulic Machinery Co., Ltd, found in Qingdao national high-tech industrial development zone in 2006, is mainly engaged in R&D, manufacture, sales and service of hydraulic drive device of construction machinery, mining machinery, pilling machinery, road machinery, high-end agricultural machinery. The company has researched and developed many types of travel devices and realized large, medium, small and mini-serialization pattern. LKC Hydraulic has been a domestic professional manufacturer of hydraulic drive device. The company won the honorary title of Key Products of National Consolidation of Industrial Foundation Program, Demonstration Enterprise of One Package Application Plan, Member Unit of National Ministry of Industry and Information Technology Construction Machinery High-end Hydraulic Parts and Hydraulic System Industrialization Collaborative Work Platform, National High-tech Enterprise, and it has been the Advantage Enterprise selected by CNIPA. The product of LKC was judged "Qingdao Famous Brand" and listed in the "National Machinery Customer Satisfactory Product Directory".

Culture Company 企业文化>>

愿 景：世界液压一流品牌

定 位：液压驱动装置专业制造商

价 值 观：专业、专注、创新、极致

Vision: World-class Hydraulic Brand

Orientation: Professional Manufacturer of Hydraulic Drive Device

Value: Professional Concentrated Innovative Extreme



LKC Development

力克川发展历程>>

理想，是事业的翅膀；
扎实，才能验证成功的轨迹。



2006年	2007年	2009年	2010年	2011年	2012年	2013年	2014年	2015年	2016年	2017年	2018年
<p>2006年7月28日，青岛力克川液压机械有限公司成立。</p> <p>July 28, 2006, Qingdao LKC Hydraulic Machinery Co., Ltd. founded.</p> <p>2006年12月26日，聘请航空部5位液压专家成立力克川研发中心，其中总工程师享受国务院特殊津贴，是研究员级高级工程师。</p> <p>December 26, 2006, employed five senior engineers from Aerospace Ministry, established R&D Center, the Chief Engineer is Senior Engineer, received Particular Subsidy of the State Council.</p>	<p>2007年6月，LTM18行走装置研制成功。</p> <p>June 2007, LTM18 Traveling Device developed successfully.</p> <p>2008年</p> <p>2008年3月，LSM64回转装置、LTM22行走装置研制成功。</p> <p>March 2008, LSM64 Swing Device, LTM22 Traveling Device developed successfully.</p> <p>2008年10月，LTM09与LTM07行走装置、LSM30回转装置研制成功。</p> <p>October 2008, LTM09 and LTM07 Traveling Device, LSM30 Swing Device developed successfully.</p>	<p>2009年1月，LSM151回转装置、LTM40行走装置研制成功。</p> <p>January 2009, LSM151 Swing Device, LTM40 Traveling Device developed successfully.</p> <p>2009年6月，L3V63柱塞泵研制成功，力克川新厂区落成并迁入。</p> <p>June 2009, L3V63 Piston Pump developed successfully, LKC moved into the new factory.</p> <p>2009年11月，6T挖掘机主阀、系列先导阀研制成功。</p> <p>November 2009, MCV for 6T excavator and Series Pilot Valves developed successfully.</p>	<p>2010年4月，LMP柱塞泵研制成功。</p> <p>April 2010, LMP Piston Pump developed successfully.</p> <p>2010年11月，L6V80和L6V107变量柱塞马达研制成功。</p> <p>November 2010, L6V80 and L6V107 Piston Motor developed successfully.</p> <p>2010年12月，成功申请7项授权专利。</p> <p>December 2010, successfully applied for seven Issued Patent.</p>	<p>2011年7月，确立“履带驱动装置专业制造商”战略发展目标。</p> <p>July 2011, established Strategic Development Objective—Professional Manufacturer of Crawler Drive Device.</p> <p>2011年9月，广州凯锐通销售公司成立。</p> <p>September 2011, Guangzhou Crystal Sales Company founded.</p> <p>2011年10月，通过ISO9001质量管理体系认证。</p> <p>October 2011, passed ISO9001 quality management system certification.</p> <p>2011年12月，与美国明尼苏达大学建立技术交流平台，与浙江大学构建产学研基地。</p> <p>December 2011, established the technical exchange platform with Minnesota University, building research base with Zhejiang University.</p>	<p>2012年3月，与韩国TIC株式会社签订战略合作协议。</p> <p>March 2012, signed strategic cooperation agreement with Korea TIC Co., Ltd.</p> <p>2012年6月，3.5T、4.5T、5.5T行走装置研发成功。</p> <p>June 2012, 3.5T, 4.5T, 5.5T Traveling device developed successfully.</p>	<p>2013年1月，力克川成为“工程机械高端液压件及液压系统产业化协同平台”成员单位。</p> <p>January 2013, became a member of collaborative platform for high-end construction machinery hydraulic components and industrialization of hydraulic system.</p> <p>2013年11月，北京凯锐斯通工程机械有限公司成立。</p> <p>November 2013, Beijing Crystal Construction Machinery Co., Ltd founded.</p>	<p>2014年3月，2.0T、36T行走装置研发成功。</p> <p>March 2014, 2.0T, 36T Traveling device developed successfully.</p> <p>2014年7月开始筹划“高端液压件自动化生产线”，2015年5月投产运营。</p> <p>July 2014, started to meditate on the program of automatic high-end hydraulic production line, expected to put it into operation in May 2015.</p> <p>2014年9月，力克川学院成立。</p> <p>September 2014, LKC College founded.</p>	<p>2015年7月28日，战略营销委员会正式成立。</p> <p>July 28, 2015, LKC Hydraulic Strategic Marketing Committee was formally established.</p> <p>引进FMS智能柔性生产线，建设智慧型工厂。</p> <p>FMS Intelligent flexible production line was introduced and an Intelligent Factory was built.</p> <p>成功研发LSM24回转马达。</p> <p>LSM24 Swing device was developed successfully.</p>	<p>2016年3月，确立“液压驱动装置专业制造商”战略发展目标。</p> <p>March 2016, Established Strategic Development Objective—Professional Manufacturer of Hydraulic Drives.</p> <p>9月，力克川液压成立技术研究所。</p> <p>The Institute of Technology was established. LKC in Sep 2016.</p> <p>10月，成功研发LSM10、LSM18回转马达。</p> <p>LSM10, LSM18 Swing device was developed successfully.</p> <p>12月，入选国家高新技术企业。</p> <p>Selected as a High-tech enterprise successfully in Dec.</p>	<p>2017年5月，与上海交通大学、上海工程技术大学建立产学研合作关系。</p> <p>Establish the cooperative relationship with Shanghai Jiaotong University and Shanghai University of Engineering Science.</p> <p>9月，成功研发LSM16、LSM34、LSM64回转马达。</p> <p>LSM16, LSM34, LSM64 Swing device were developed successfully.</p> <p>12月，入选国家工信部“工业强基工程一条龙应用计划示范企业”。</p> <p>It is selected to be a Demonstration Enterprise of National Consolidation of Industrial Foundation Program and One Package Application Plan in Dec, 2017.</p> <p>12月，荣获青岛市名牌，获批青岛市企业技术中心。</p> <p>Won the honor of Qingdao Famous Brand, approved as a Qingdao Enterprise Technology Center.</p>	<p>2018年9月，入选国家知识产权优势企业。</p> <p>Was selected as the advantage enterprise by CNIPA.</p> <p>9月，入选2018青岛高科技高成长20强企业。</p> <p>LKC selected as the Top 20 High-tech with great potential Enterprises of Qingdao in 2018.</p> <p>10月，成功研发LTM135行走马达。</p> <p>LTM135 Traveling device developed successfully.</p>

Goals Strategic 战略目标>>

力克川液压以工程机械领域积累十二年的液压技术为基础，不断创新、发展、精益求精，力争成为国际液压系统集成制造商与服务商。

Based on the accumulation of 12 years in the field of the hydraulics for Construction Machinery, keep innovating, developing and improving, LKC strives to become an international hydraulic system integrator and service provider.

► 第一阶段 The First Stage:

以工程机械市场为主导，自主研发多元化产品结构
Oriented in Construction Machinery market, independently researched seven series and more than thirty kinds of hydraulic products

► 第二阶段 The Second Stage:

面向矿山、煤矿及工程机械，专注研发行走和回转装置，形成中、小、微系列化格局，成为液压驱动装置专业制造商
Gearing to the needs of Mining, Coal Mine and Construction Machinery, focuses on the research and development of Travel and Swing Device, and becoming professional manufacturer of Track Drive Device

► 第三阶段 The Third Stage:

协同国内外专业液压件制造商与主机企业，结成战略联盟，发展成为液压系统集成制造商与服务商

Cooperating with professional hydraulic components manufacturers and the machinery manufacturer all over the world, develops into a hydraulic system integrator and service provider



LKC College 力克川学院>>



力克川学院2014年9月28日成立，是力克川液压为推动公司发展战略实施而成立的，是公司变革的推动者和公司文化的宣传者。既是公司内部人才培养的“黄埔军校”，也是专业高端液压技术培训基地。

To promote the developing strategy of LKC Hydraulic Machinery Co.,Ltd, LKC College was established on September 28, 2014. It will be the whampoa military academy of internal talents training as well as the training base of professional high-end hydraulic technology.

► 学院愿景 Vision:

培育高端优秀液压人才。

Train high-end excellent hydraulic talents.

► 学院使命 Mission:

打造高端液压培训“一站式”智力平台。

To create “single-stop-type” intelligence platform of high-end hydraulic training.

► 学院价值观 Teaching mode:

诚信、奉献、创新、卓越、极致。

Honest Devotion Innovation Excellence Perfection.

Capabilities R&D and Testing 研发与试验能力>>

钻研，让实力立足前沿；探索，始于梦想源于责任。



为提升核心竞争力，公司建立了国际一流实验室、无尘总装车间，引进了FMS智能柔性生产线、智能数控机床、精密检测中心等先进的加工及检测设备；2014年7月投资1.2亿元建设的“高端液压件自动化生产线”，于2015年5月投产运营，致力于将产品性能和品质提升至世界先进水平。

In order to improve the core competitiveness, the company established world-class laboratory, dust-free assembly room and introduced advanced processing and testing equipments, for example, FMS, intelligent CNC lathes and high precision testing center. The company invests more than 20 million dollars into construction of automatic high-end hydraulic production line in July 2014 and put it into operation in May 2015 to improve the product performance and quality to the advanced level of the world.





微型系列行走马达 Micro Series Travel Motor

产品介绍 Product introduction

本产品为马达与减速机一体的行走装置。由双排量轴向柱塞马达、行星减速器组成。马达内置防反转阀、停车制动装置及高低档转换装置。特点：传动比大、结构紧凑、效率高、可靠性强、体积小、运行平稳、噪音低等。

Travel motor: This product is a traveling device integrated with motor and reducer. It consists of a double displacement axial piston motor and a planetary reducer. There is a built-in anti-reverse valve, parking brake device and high and low shift device in the motor. Features: large transmission ratio, compact structure, high efficiency, high reliability, small size, stable operation and low noise.



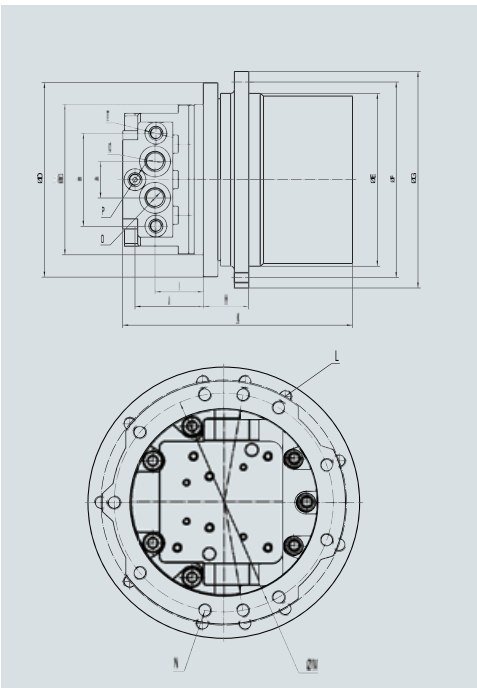
技术参数 Specifications

型号 Model	最大理论输出扭矩 (N.m) Max Output Torque	最高工作压力 (Mpa) Max Working Pressure	最高输出转速 (r/min) Max Output Speed	适用吨位 (T) Applicable Tonnage
TM02	1500	24.5	75	~ 1.5
TM03	2100	24.5	70	~ 2.0
TM03A	2900	24.5	50	~ 3.5
TM04	4200	24.5	55	~ 4.5
TM06	6300	27.5	55	~ 6.0

安装参数 Parameters

型号 Model	TM02	TM03	TM03A	TM04	TM06
A	33	33	40	40	40
B	86	86	102	102	102
C	140	150	165	165	180 (200)
D	175	190	215	215	246 (266)
E	140	160	190	210	230
F	155	180	215	232	262
G	175	200	238	255	288
H	45	40	50	70	75 (68)
I	43	58	48	48	48
J	58	74	68	68	88 (63)
K	200	227	252	280	340
L	9-M10	12-M10	11(9)-M12	12-M12	12-M14
M	155	170	192	192	220 (240)
N	8-M10	12-M10	11-M12	13 (9) -M12	9-M14
O	G3/8	G3/8	G1/2	G1/2	G1/2
P	G1/8	G1/8	G1/4	G1/4	G1/4
T	G1/4	G1/4	G1/4	G1/4	G1/4

详细尺寸参数以我司技术图纸为准。
Detailed dimension parameters shall be subject to our technical drawings.



小型系列行走马达 Small Series Travel Motor

产品介绍 Product introduction

本产品为马达与减速机一体的行走装置。由双排量轴向柱塞马达、行星减速器组成。马达内置防反转阀、停车制动装置及高低档转换装置。特点：传动比大、结构紧凑、效率高、可靠性强、体积小、运行平稳、噪音低等。

Travel motor: This product is a traveling device integrated with motor and reducer. It consists of a double displacement axial piston motor and a planetary reducer. There is a built-in anti-reverse valve, parking brake device and high and low shift device in the motor. Features: large transmission ratio, compact structure, high efficiency, high reliability, small size, stable operation and low noise.



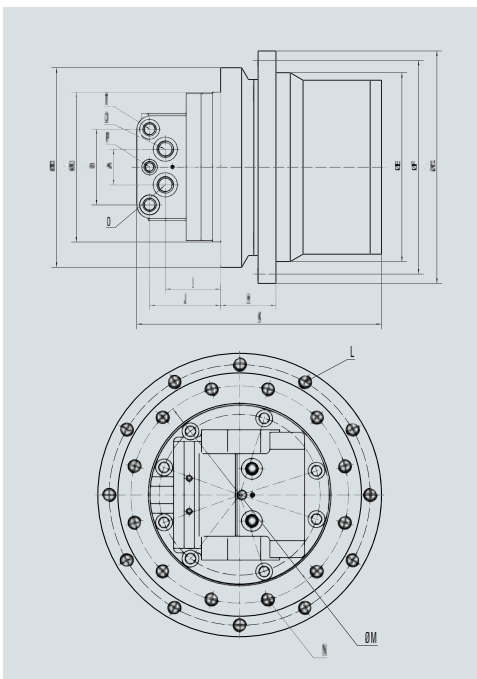
技术参数 Specifications

型号 Model	最大理论输出扭矩 (N.m) Max Output Torque	最高工作压力 (Mpa) Max Working Pressure	最高输出转速 (r/min) Max Output Speed	适用吨位 (T) Applicable Tonnage
TM07	10500	31.5	50	~ 7
TM09	11500	31.5	50	~ 9
TM10	13700	27.5	50	~ 10
TM18	16900	31.5	60	~ 12
TM22	22000	31.5	55	~ 15
TM30	30000	31.5	30	~ 18

安装参数 Parameters

型号 Model	TM07	TM09	TM10	TM18	TM22	TM30
A	50	50	50	50	50	50
B	106	106	106	116	116	116
C	210	210	210	246	246	246
D	268	280	280	308	308	308
E	250	265	265	324	324	324
F	282	300	300	364	364	364
G	306	326	326	394	394	394
H	68	80	80	100	100	100
I	78	78	78	87	87	87
J	109.5	149	149	118	118	118
K	356	362	362	414	414	488
L	12-M14	12-M14	12-M14	15-M16	15-M16	15-M16
M	244	250	250	280	280	280
N	12-M14	12-M16	12-M16	20-M16	20-M16	20-M16
O	G1/2	G1/2	G1/2	G3/4	G3/4	G3/4
P	G1/4	G1/4	G1/4	G1/4	G1/4	G1/4
T	G3/8	G3/8	G3/8	G1/2	G1/2	G1/2

详细尺寸参数以我司技术图纸为准。
Detailed dimension parameters shall be subject to our technical drawings.





中型系列行走马达 Medium Series Travel Motor

产品介绍 Product introduction

本产品为马达与减速机一体的行走装置。由双排量轴向柱塞马达、行星减速器组成。马达内置防反转阀、停车制动装置及高低档转换装置。特点：传动比大、结构紧凑、效率高、可靠性强、体积小、运行平稳、噪音低等。

Travel motor: This product is a traveling device integrated with motor and reducer. It consists of a double displacement axial piston motor and a planetary reducer. There is a built-in anti-reverse valve, parking brake device and high and low shift device in the motor. Features: large transmission ratio, compact structure, high efficiency, high reliability, small size, stable operation and low noise.



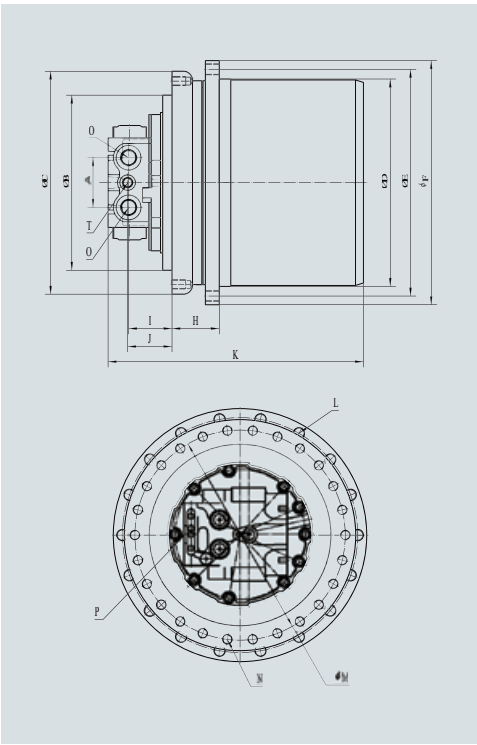
技术参数 Specifications

型号 Model	最大理论输出扭矩 (N.m) Max Output Torque	最高工作压力 (Mpa) Max Working Pressure	最高输出转速 (r/min) Max Output Speed	适用吨位 (T) Applicable Tonnage
TM35	35000	34.5	50	~ 20
TM40	46000	34.5	50	~ 25
TM60	60000	34.5	50	~ 30

安装参数 Parameters

型号 Model	TM35	TM40	TM60
A	108	108	108
B	300	300	300
C	370	370	484
D	402	402	450
E	440	440	492
F	470	470	530
H	98.5	98	102
I	130	130	94
J	132	132	96
K	543	548	554
L	30-M16	30-M16	18-M24
M	340	340	440
N	30-M16	30-M16	26-M20
O	G1	G1	G1
P	G1/4	G1/4	G1/4
T	G1/2	G1/2	G1/2

详细尺寸参数以我司技术图纸为准。
Detailed dimension parameters shall be subject to our technical drawings.



闭式系统行走马达 Closed System Travel Motor

产品介绍 Product introduction

本产品为马达与减速机一体的液压行走装置。由双排量轴向柱塞马达、行星减速器组成。马达内置冲洗阀、高低档切换阀、外置驻车制动阀。特点：传动比大、结构紧凑、效率高、可靠性强，体积小、运行平稳、噪音低等。

Closed system travel motor: This product is a hydraulic traveling device integrated with motor and reducer. It consists of a double displacement axial piston motor and a planetary reducer. There is a built-in flush valve, high and low shift valve, external brake control valve in the motor. Features: large transmission ratio, compact structure, high efficiency, high reliability, small size, stable operation and low noise.



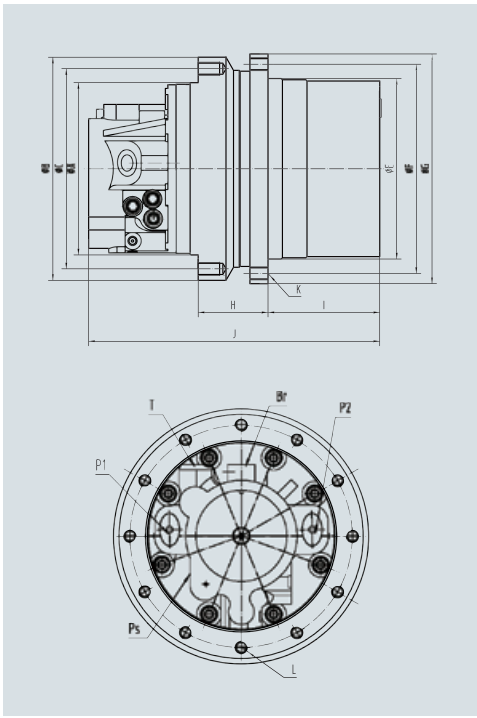
技术参数 Specifications

型号 Model	最大理论输出扭矩 (N.m) Max Output Torque	最高工作压力 (Mpa) Max Working Pressure	最高输出转速 (r/min) Max Output Speed	适用吨位 (T) Applicable Tonnage
TM03VB	3500	27.5	100	~ 3.5
TM04VB	5000	27.5	110	~ 5
TM09VB	9000	31.5	50	~ 7

安装参数 Parameters

型号 Model	TM03VB	TM04VB	TM09VB
A	210	210	210
B	268	268	268
C	244	244	244
E	210	230	250
F	245	260	265
G	288	286	300
H	70	85	80
I	153	146	146
J	356	356	362
K	12-M16	12-M16	12-M14
L	12-M16	12-M16	12-M14
P1/P2	1" -1/16-12UNF		
Ps	9/16" -18 UNF		
T	3/4" -16 UNF		
Br	9/16" -18 UNF		

详细尺寸参数以我司技术图纸为准。
Detailed dimension parameters shall be subject to our technical drawings.





微型系列回转马达 Micro Series Swing Motor

产品介绍 Product introduction

本产品为斜盘式直轴液压马达驱动的回转装置。马达内部装有补油阀、回转制动器、溢流阀等辅件，保证了回转装置运转平稳，安全可靠。特点：结构简单、体积小、噪音低。

Swing motor: This product is a swing device driven by a swash plate type straight axis hydraulic motor. There are built-in accessories like oil filling valve, rotary brake and relief valve to ensure stable and safe operation of the swing device. Features: simple structure, small size and low noise.



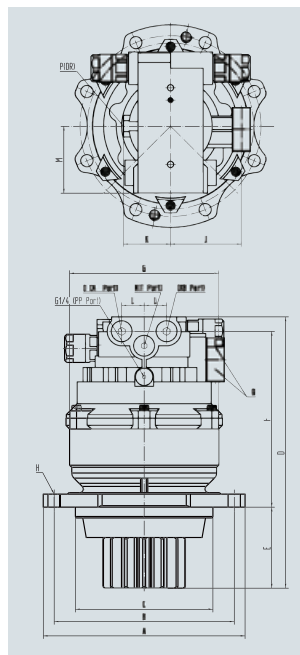
技术参数 Specifications

型号 Model	最大理论输出扭矩 (N.m) Max Output Torque	最高工作压力 (Mpa) Max Working Pressure	最高输出转速 (r/min) Max Output Speed	适用吨位 (T) Applicable Tonnage
LSMN-10-10	627	21.6	60	~2.5
LSMN-16-21	1000	21.6	90	~3.5
LSMN-24-21	1399	21.6	100	~5
LSMN-34-23	2434	21.6	60	~6
LSMK-27B-10A	830	20.6	100	~2.5
LSMK-27B-16A	1270	20.6	100	~3.5
LSMK-27B-23A	2040	20.6	100	~6
LSMK-44B-21A	3480	24	82	~8

安装参数 Parameters

型号 Model	LSMN-10-10	LSMN-16-21	LSMN-24-21	LSMN-34-23	LSMK-27B-10A	LSMK-27B-16A	LSMK-27B-23A	LSMK-44B-21A
A	Φ193	Φ242	Φ248	Φ280	Φ242	Φ242	Φ248	Φ310
B	Φ168	Φ210	Φ220	Φ250	Φ212	Φ212	Φ220	Φ275
C	Φ110	Φ150	Φ175	Φ190	Φ150	Φ150	Φ175	Φ220
D	264	283	323	368	284	323	364.5	503
E	67	96	94	105	76	83	97.5	104
F	178	168	208	243	123	155	190.5	344
G	162	208	215	240	210	210	210	240
H	4-Φ13	6-Φ17	10-Φ17	8-Φ17	6-Φ15	6-Φ15	8-Φ17	8-Φ18
J	103	101.5	84.5	96	85	85	85	122
K	59.5	66.5	61.5	65.5	75	75	125.5	102.5
L	2-25.5	2-25.5	2-25.5	2-31	2-29.5	2-29.5	2-29.5	2-26
M	98.5	83	83	93	98.5	83	83	93
N	G3/8	G3/8	G3/8	G1/2	G3/8	G3/8	G3/8	G1/2
O	2-G3/8	2-G3/8	2-G3/8	2-G1/2	2-G3/8	2-G3/8	2-G3/8	2-G1/2
P	G3/8	G3/8	G3/8	G3/8	G1/4	G1/4	G3/8	G3/8
Q	2-G1/4	2-G1/4	2-G1/4	2-G1/4	2-G1/4	2-G1/4	2-G1/4	2-G1/4

详细尺寸参数以我司技术图纸为准。
Detailed dimension parameters shall be subject to our technical drawings.



中小型系列回转马达 Small and Medium Series Swing Motor

产品介绍 Product introduction

本产品为斜盘式直轴液压马达驱动的回转装置。马达内部装有补油阀、回转制动器、溢流阀等辅件，保证了回转装置运转平稳，安全可靠。特点：结构简单、体积小、噪音低。

Swing motor: This product is a swing device driven by a swash plate type straight axis hydraulic motor. There are built-in accessories like oil filling valve, rotary brake and relief valve to ensure stable and safe operation of the swing device. Features: simple structure, small size and low noise.



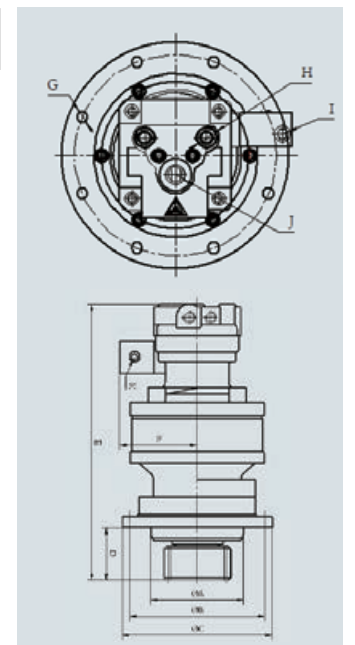
技术参数 Specifications

型号 Model	最大理论输出扭矩 (N.m) Max Output Torque	最高工作压力 (Mpa) Max Working Pressure	最高输出转速 (r/min) Max Output Speed	适用吨位 (T) Applicable Tonnage
LSME-30-19	2320	25	102	6~8
LSME-43-19	3320	25	102	6~8
LSME-64-19	4800	25	105	9~12
LSME-80-19	6050	25	105	13~16
LSME-151-17	11022	26	113	20~23
LSMC-63-19	5760	29.4	115	~12
LSMC-130-20	13400	32.4	92	~20
LSMC-180-22	18640	32.4	84	~25
LSMC-180-25	23480	32.4	67	~30

安装参数 Parameters

型号 Model	LSME-30-19	LSME-43-19	LSME-64-19	LSME-80-19	LSME-151-17	LSMC-63-19	LSMC-130-20	LSMC-180-22	LSMC-180-25
A	200	200	200	200	310	200	310	345	380
B	275	275	290	290	360	290	360	400	484
C	311	311	323	323	410	323	410	450	528
D	98.5	98.5	114.5	114.5	144.5	113	162	179	182
E	502	502	594.5	594.5	767	487	567	649	676
F	160	160	167	167	185	124.5	118	131	131
G	7-Φ18 (Φ18)	7-Φ18 (Φ18)	9-Φ18 (Φ20)	9-Φ18 (Φ20)	12-Φ22	9-Φ18+ 1-Φ20	11-Φ22+ 1-Φ24	13-Φ22+ 1-Φ24	14-Φ25
H	G1/4"	G1/4"	G3/8"	G3/8"	G1/2"	2-Φ13	2-Φ20	2-Φ20	2-Φ20
J	G3/4"	G3/4"	G1/4"	G1/4"	G1/4"	G1/4"	G1/4"	G1/4"	G1/4"
K	G3/4"	G3/4"	G3/4"	G3/4"	G1"	G3/4"	G3/4"	G1"	G1"
L	G1/4"	G1/4"	G1/4"	G1/4"	G1/4"	G1/4"	G1/4"	G1/4"	G1/4"

详细尺寸参数以我司技术图纸为准。
Detailed dimension parameters shall be subject to our technical drawings.



APPLICATIONS



微型系列行走马达
Micro Series Travel Motor



小型系列行走马达
Small Series Travel Motor



闭式系统行走马达
Closed System Travel Motor



中型系列行走马达
Medium Series Travel Motor



微型系列回转马达
Micro System Swing Motor



微型系列回转马达
Micro System Swing Motor



中小型系列回转马达
Small and Medium Swing Motor



中小型系列回转马达
Small and Medium Swing Motor

